

Thursday, 26th
January, 2023

ACP TODAY

Issue #5

Latest news and bulletin updates

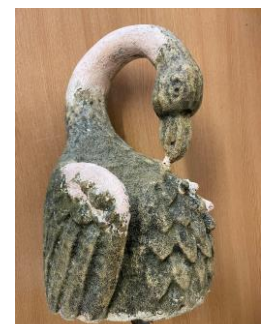
What's been going on in January

Activity in January has been somewhat hampered by severe cold weather, that has carried on from December.

We've seen temperatures drop to around -6 at night, and sometimes not exceeding -1 during the day.

This means that we can't produce concrete, as ice crystals can get into the mix, compromising its' structural integrity.

Quality is at the forefront of what we do, and although the extreme temperatures have lead to some extension of lead times, our team won't 'risk it for a biscuit'.



Final Days of January Porcelain Sale

There are a few days left of our January Porcelain Sale. Check out our social media for details!

JANUARY SALE: Now £25 sqm



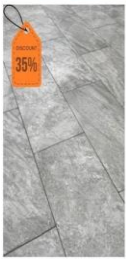
Flux Concrete: 60x60 Porcelain Tiles
30 Sqm left in Stock!!
MADE IN ITALY

JANUARY SALE: Now £33 sqm



Nordic Platino: 80x80 Porcelain Tiles
27 Sqm left in Stock!!
MADE IN ITALY

JANUARY SALE: Now £30 sqm



Brave Grey: 45x90 Porcelain Tiles
23 Sqm left in Stock!!
MADE IN ITALY

JANUARY SALE: Now £39 sqm



Marvel Cardoso: 60x120 Porcelain Tiles
7 Sqm left in Stock!!
MADE IN ITALY

There Once Was an Ugly Duckling

Last year we were approached by a client whose roof sculpture of a swan had broken and needed to be replaced (top right).

Never a team to shy away from a challenge, we proceeded to work on how we could help out.

Our initial step was to ask our client to bring in the broken sculpture. We needed to be able to assess the actual unit and work how we could replicate this for him. Our brief was to achieve an authentic weathered look, not just produce a nice neat piece of smooth concrete sculpture.

We took the broken sculpture to a company who we often work closely with, as they are specialists in making bespoke moulds.

They rebuilt the swan (middle right) in order to have a complete unit to work with. Next, they took a cast of the swan that enabled them to produce the bespoke mould (bottom right).

All that was left for us to do was to cast the swan using natural concrete. After leaving to cure, the mould was removed. What was revealed was a beautiful replication of the original swan (main photo).

We're happy to report that the client was impressed with the sculpture, and all that remained for them to do, was to install it in pride of place on their roof.

An ugly duckling no more!